



giuffridagiuseppina@gmail.com  
www.giuseppinagiuffrida.com



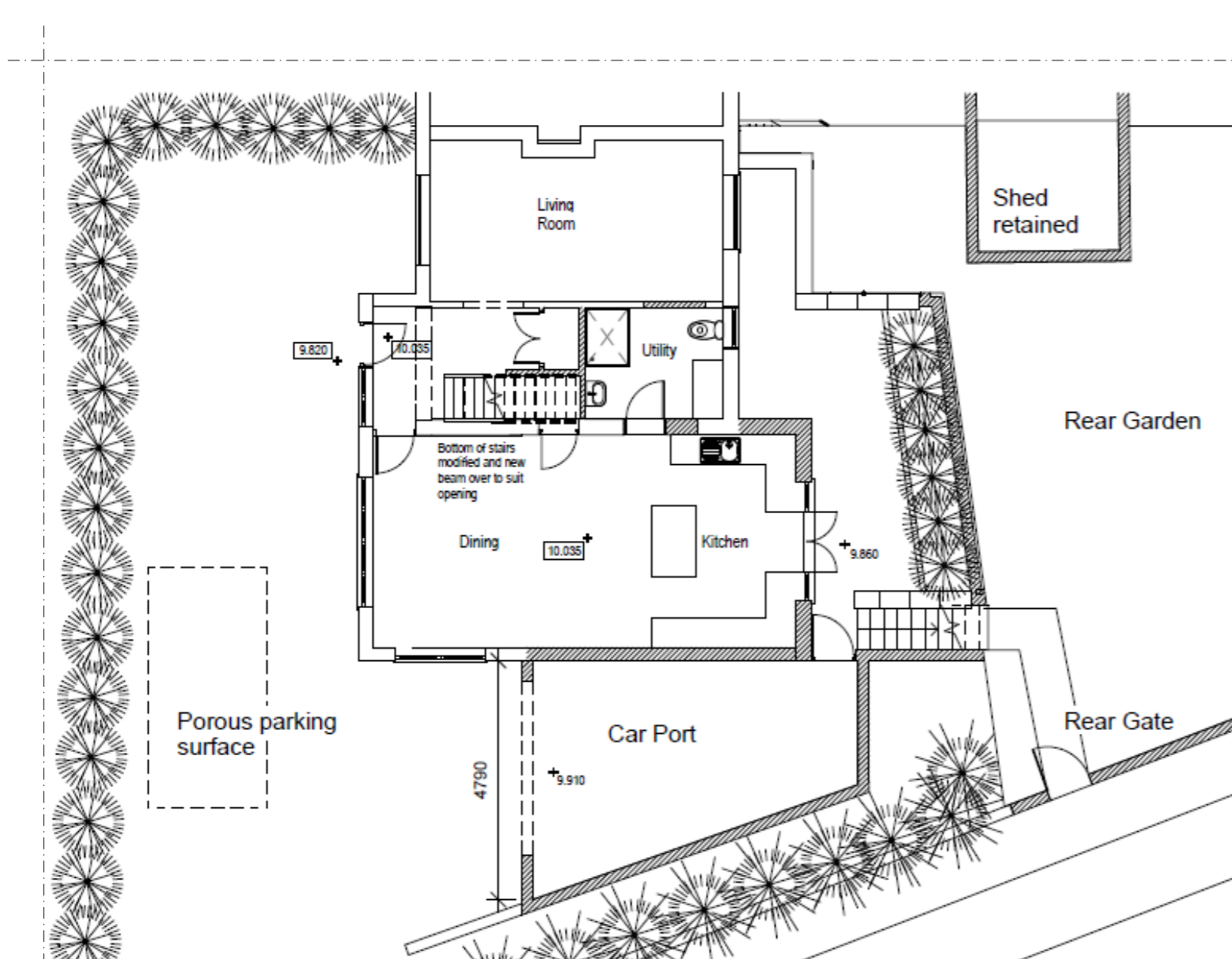
### **0007\_One & Half House, Hitchin**

Double story extension and landscaping of a semide-tached house.

*"When the client contacted me, they had planning permission for the home extension. They needed building control drawings.*

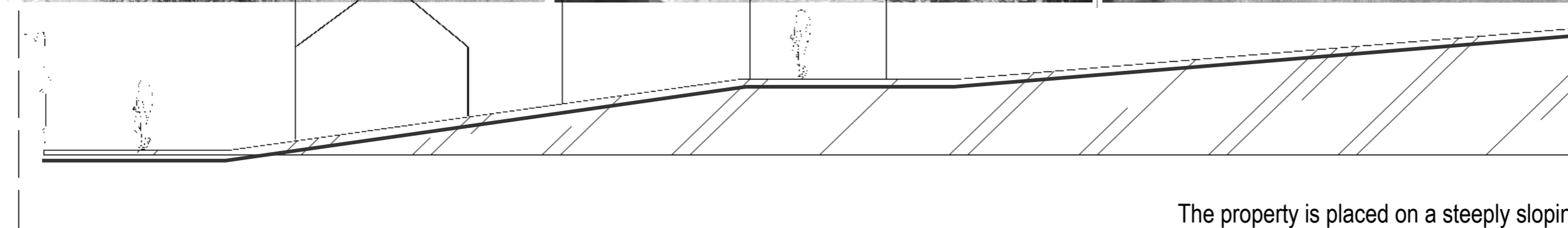
*They asked advices on the functionality of the space created".*

*2016/2017*



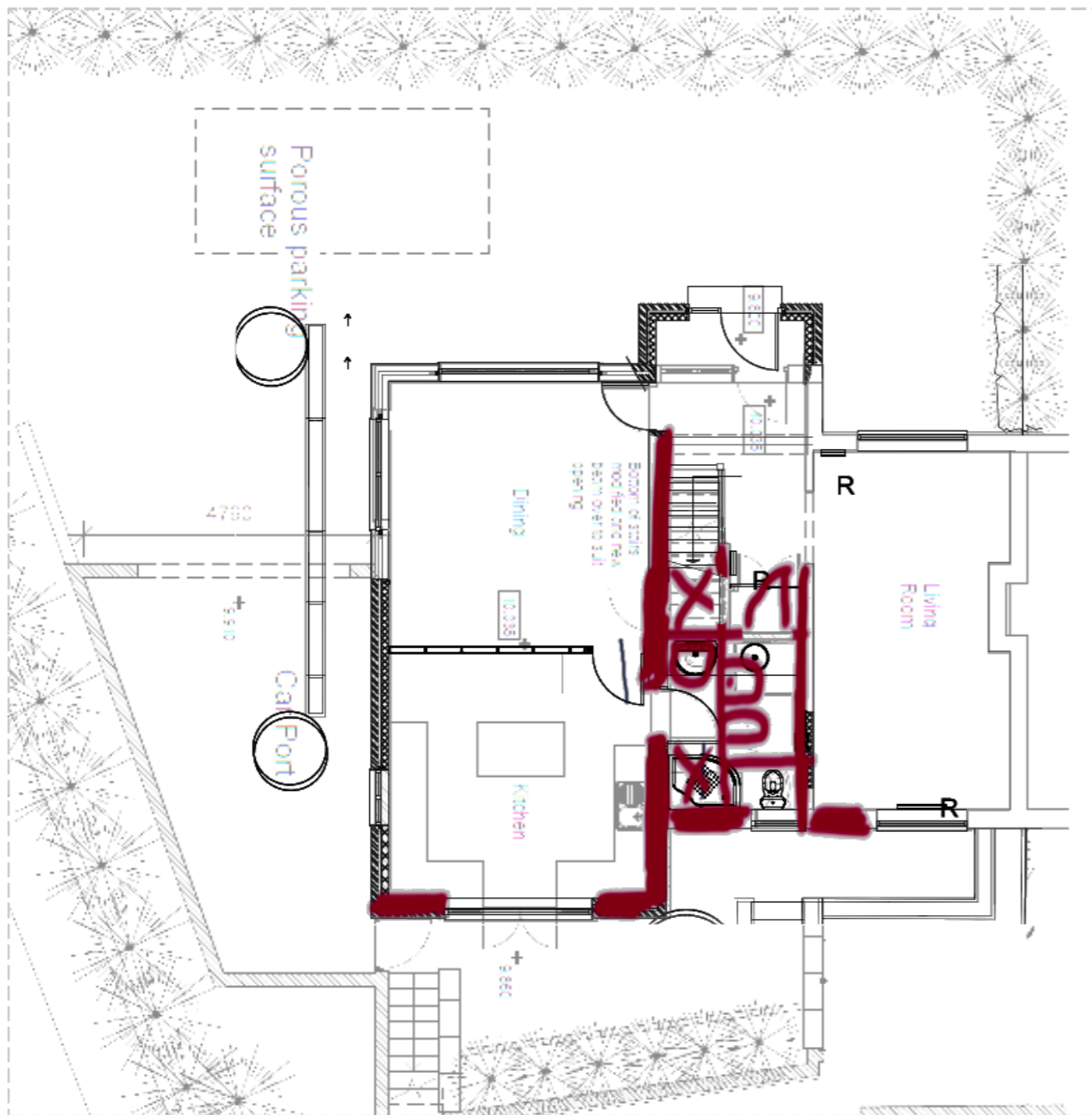
Ground floor, site plan and 3D.  
These drawings are from the first architectural studio dealing with planning permission.





The property is placed on a steeply sloping plot.

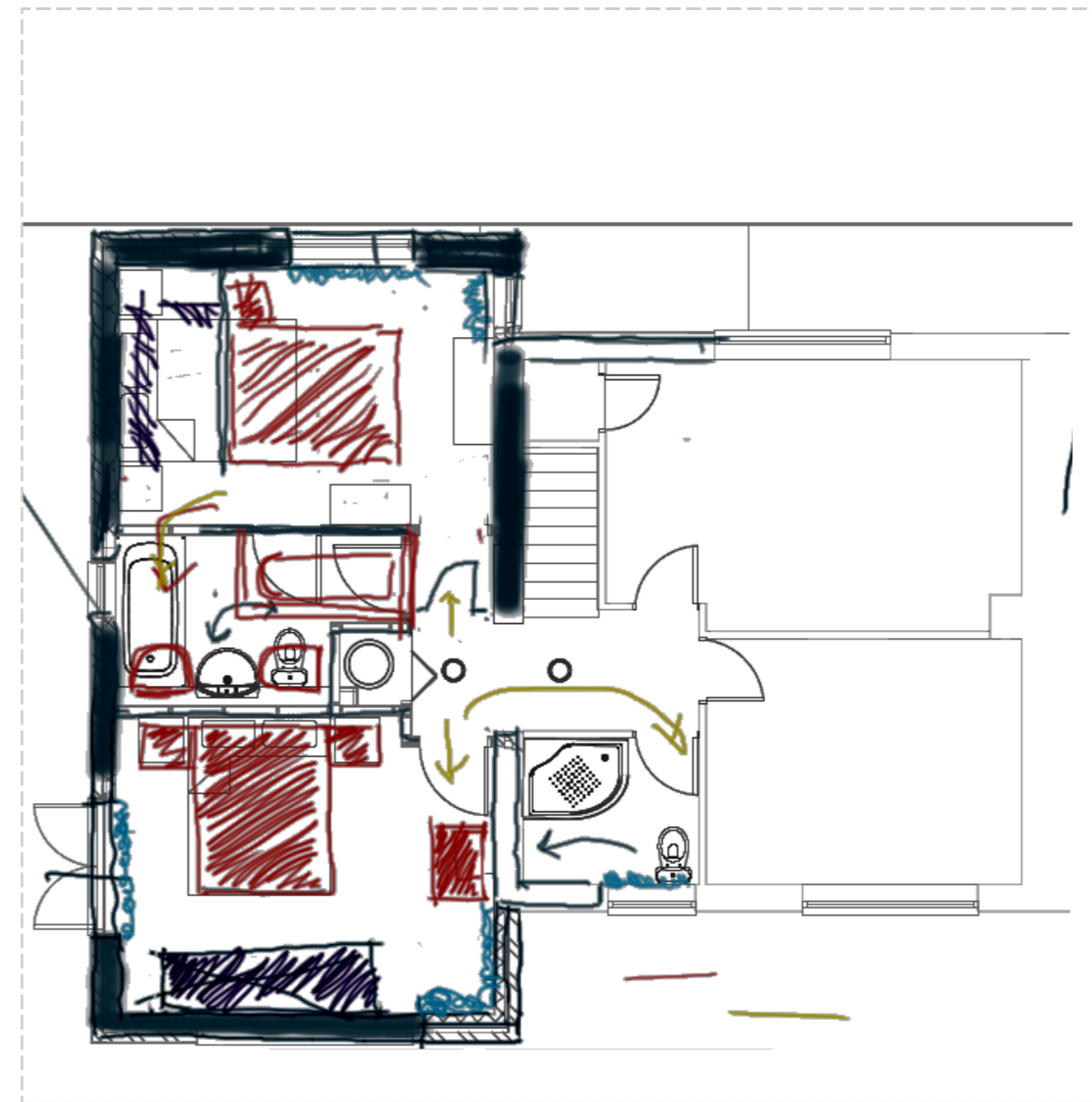




Ground floor.

I firstly suggested to create a buffer between the utility area and the kitchen.

I subsequently proposed to connect the kitchen and the living area.

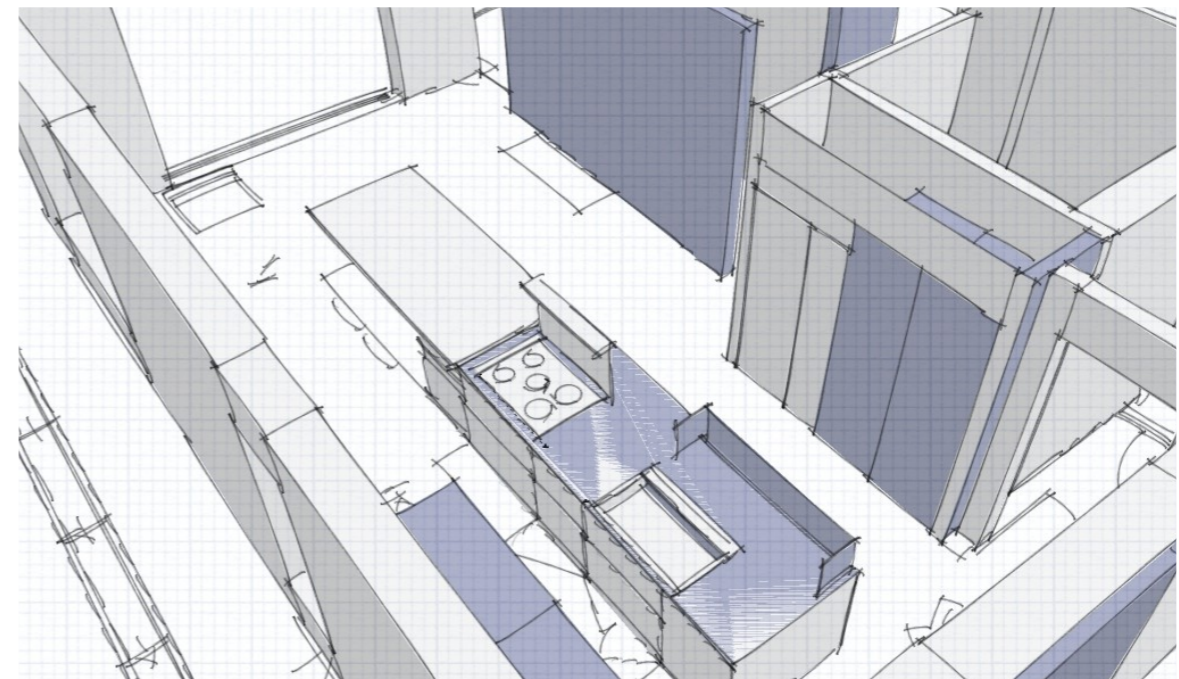
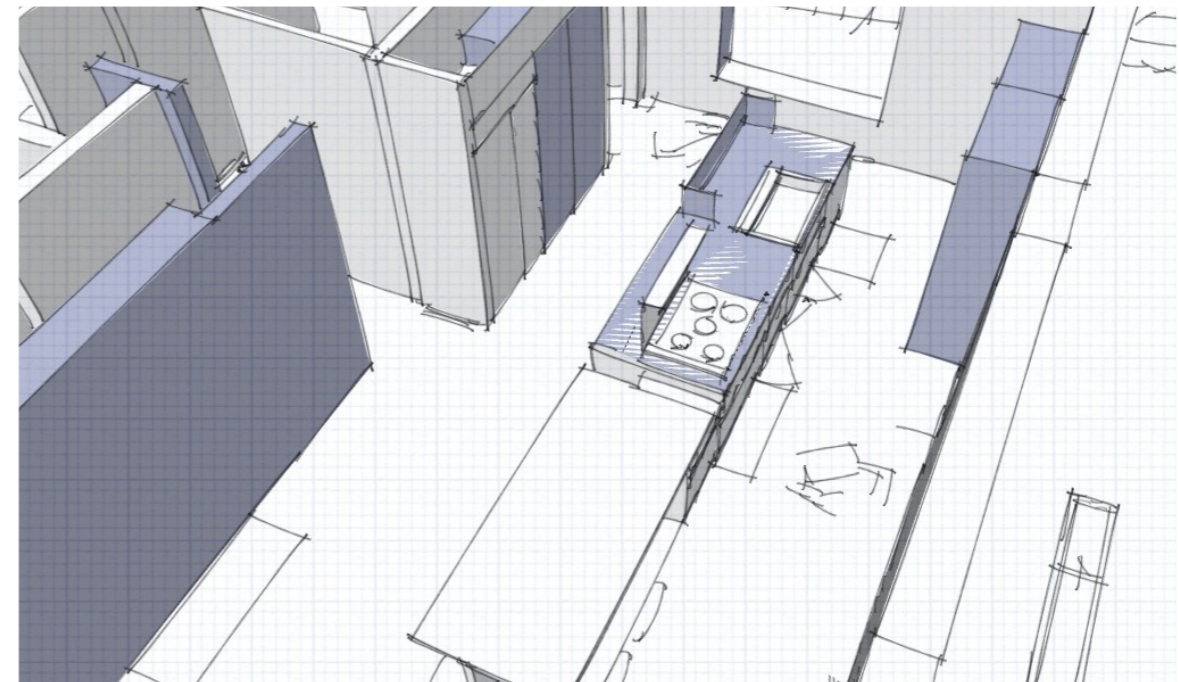
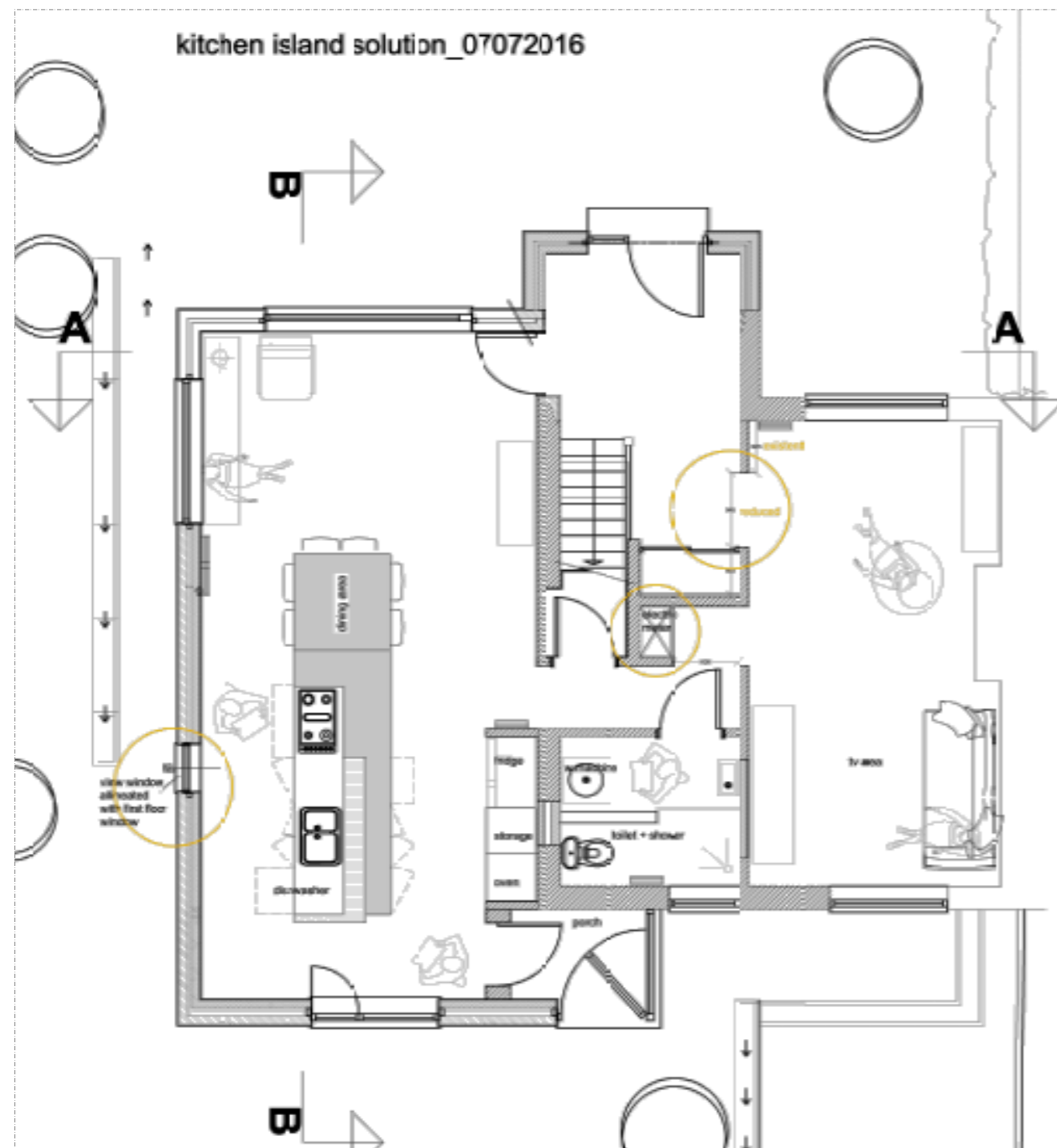


First floor

I proposed to realize a sharing bathroom between the main bed room and the children bed room.

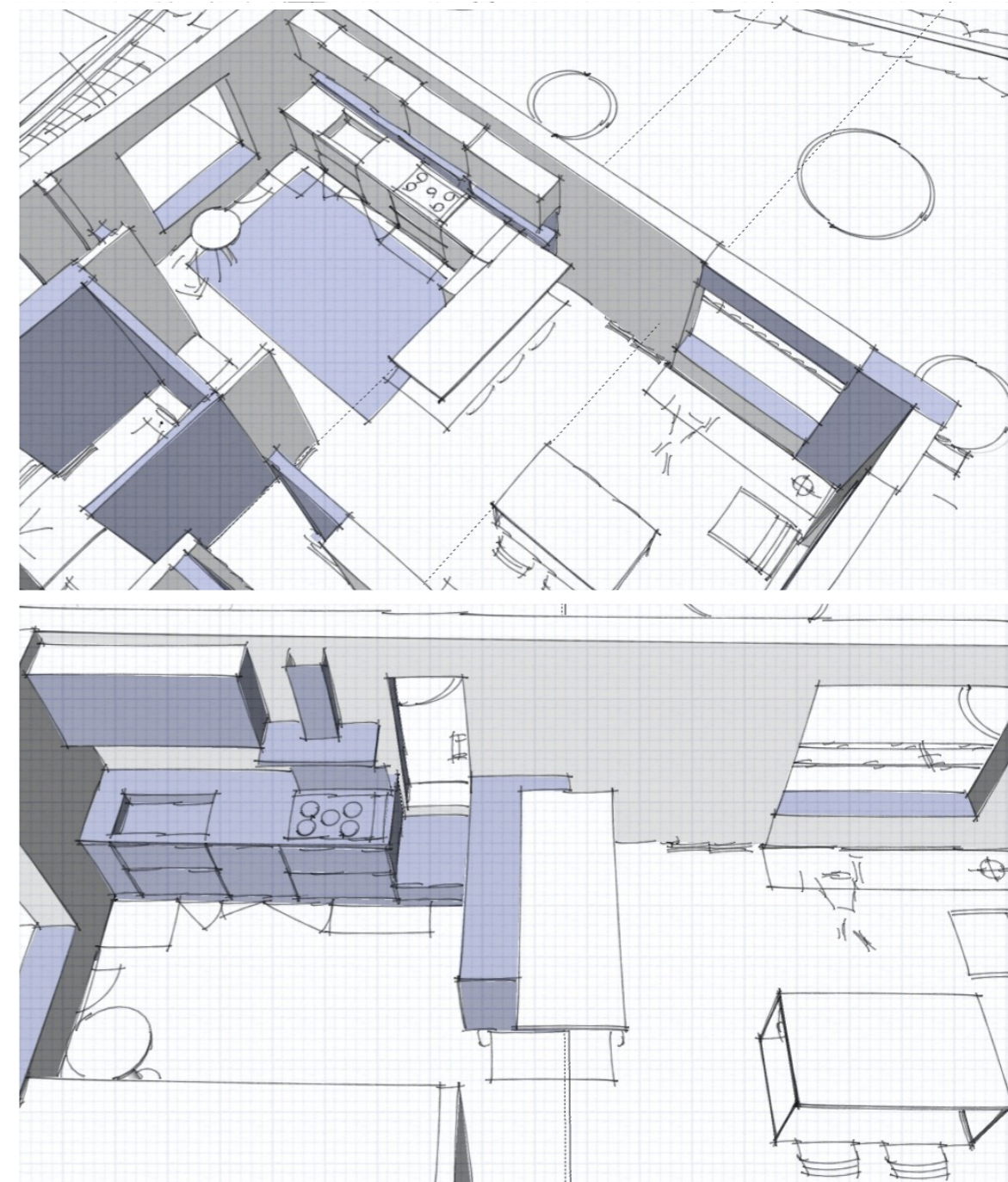
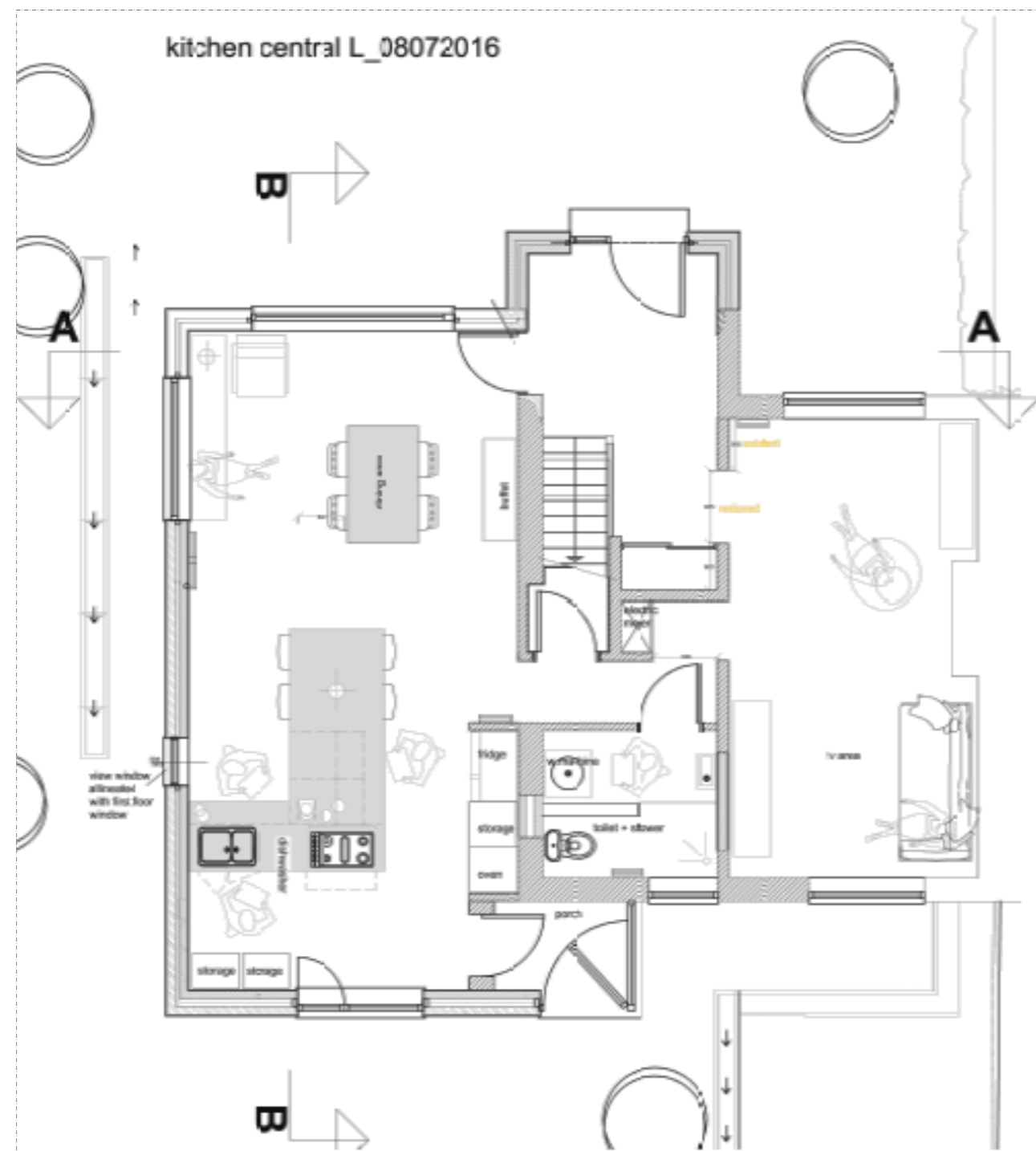
A built-in wardrobe to create more insulation from the North/East side wall.





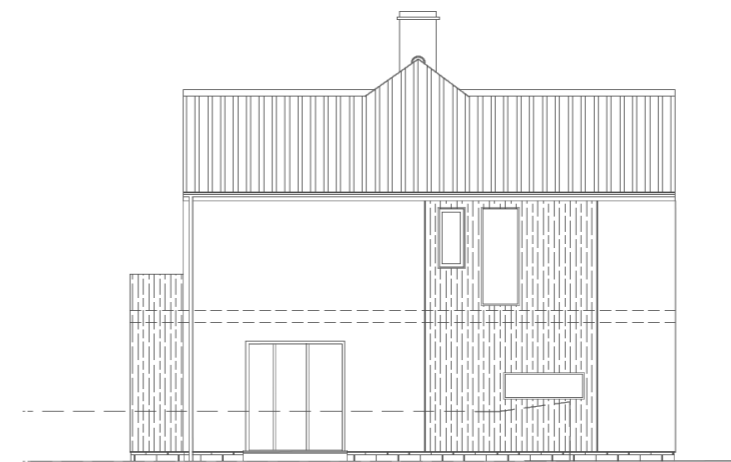
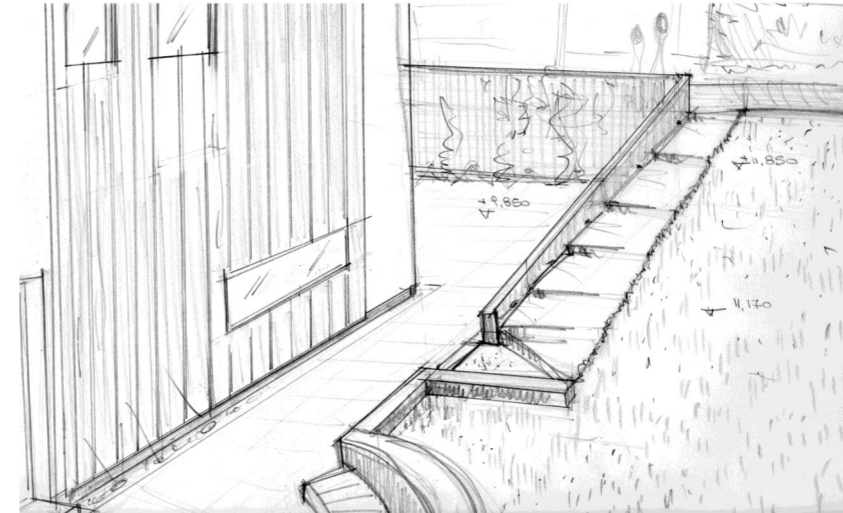
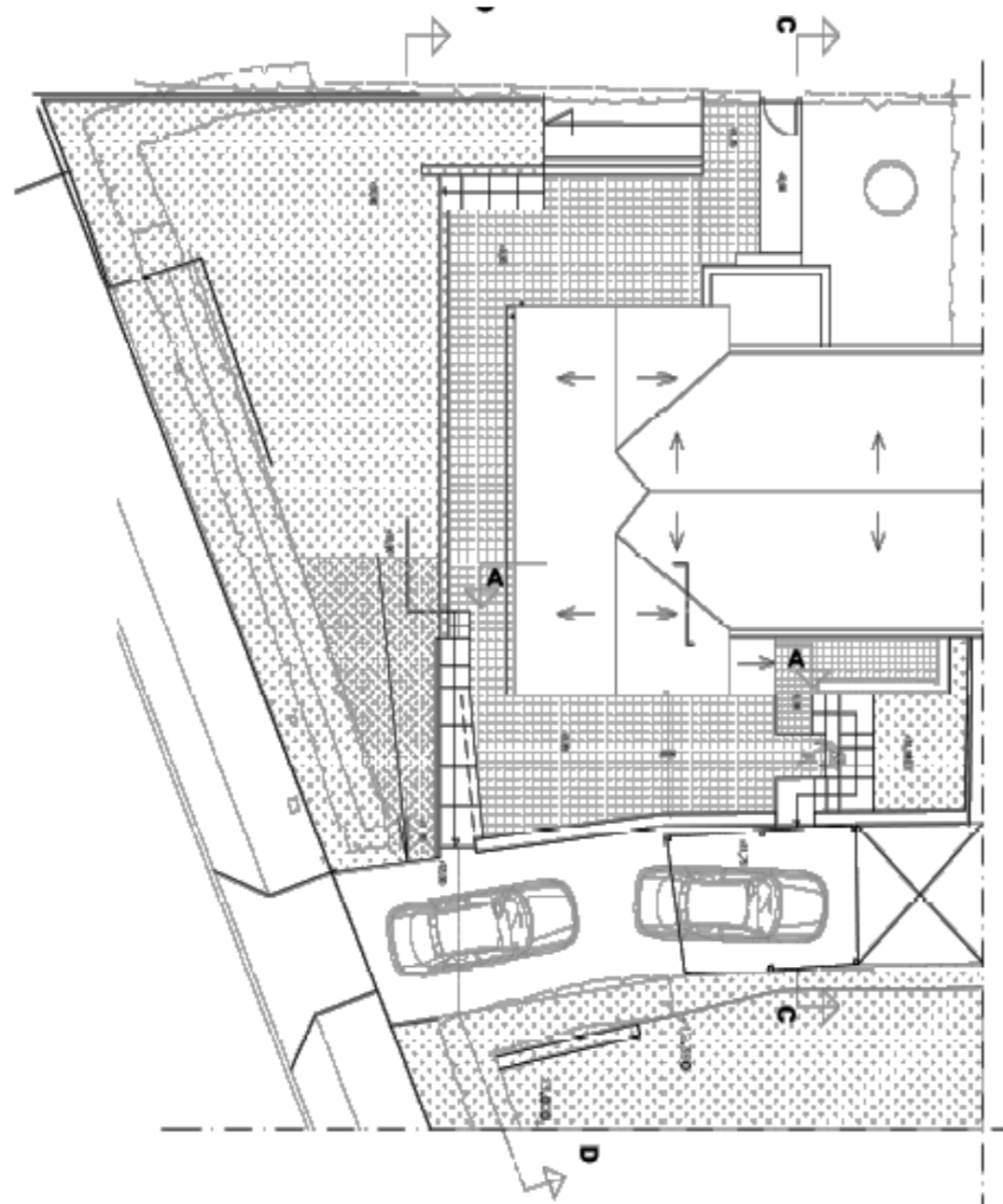
Designing kitchen...isle solution...



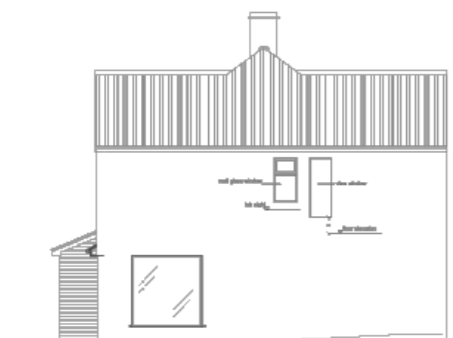


Designing kitchen...L solution...

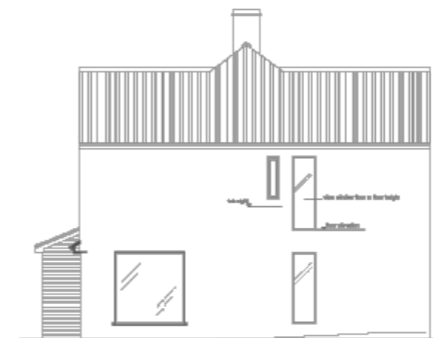
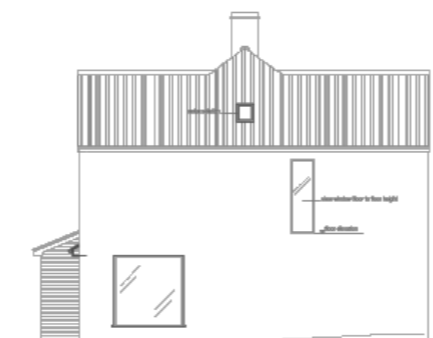
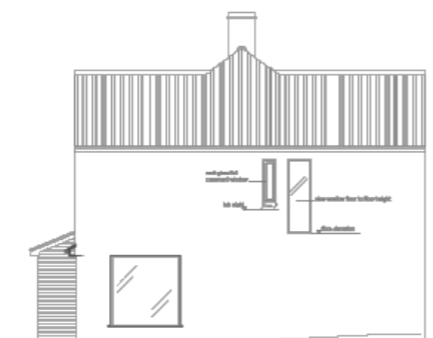




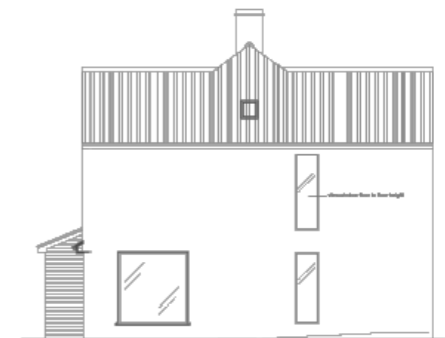
North East elevation's final solution



different height windows solutions\_07072016

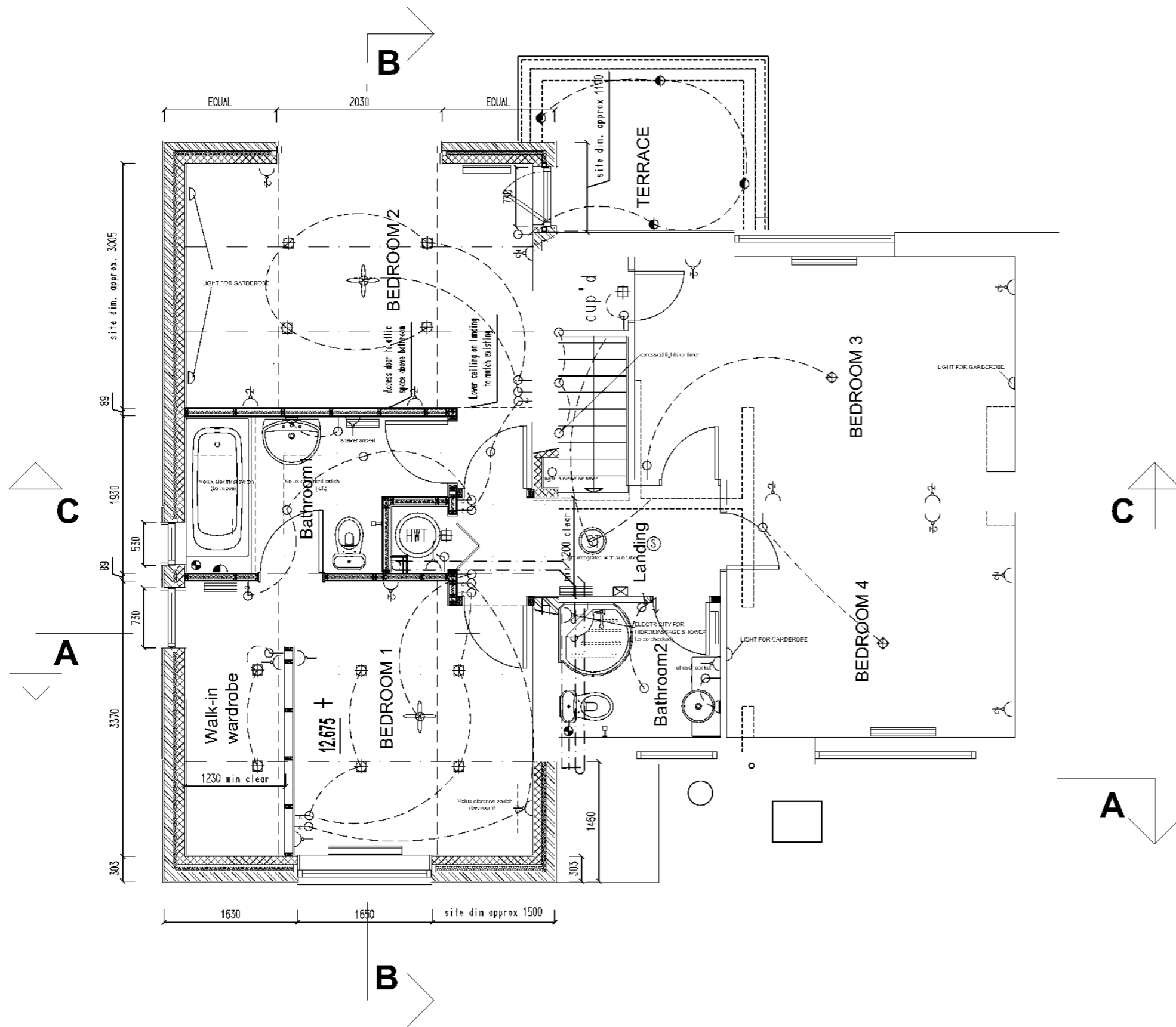


different height windows solutions + ground floor view window  
(see different kitchen solution layouts came from this window)



Working on North East elevation.



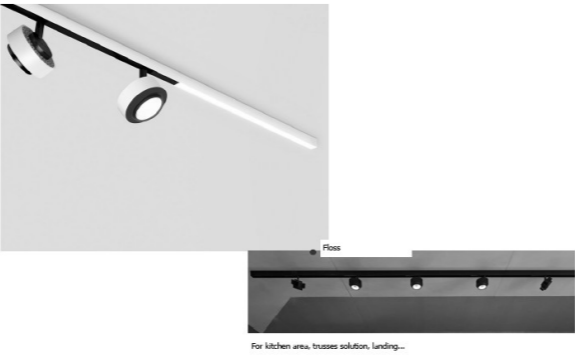
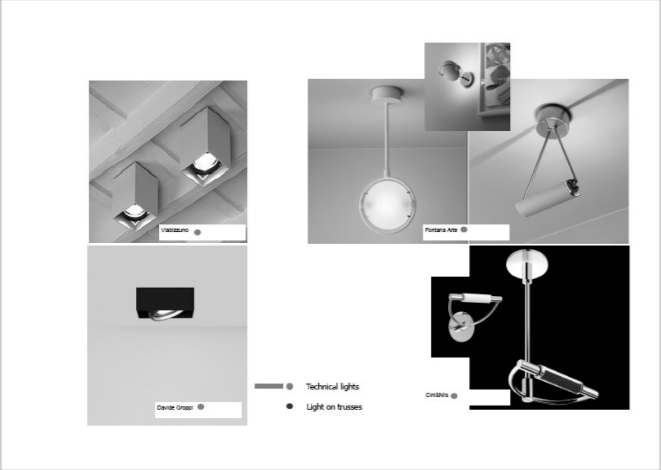
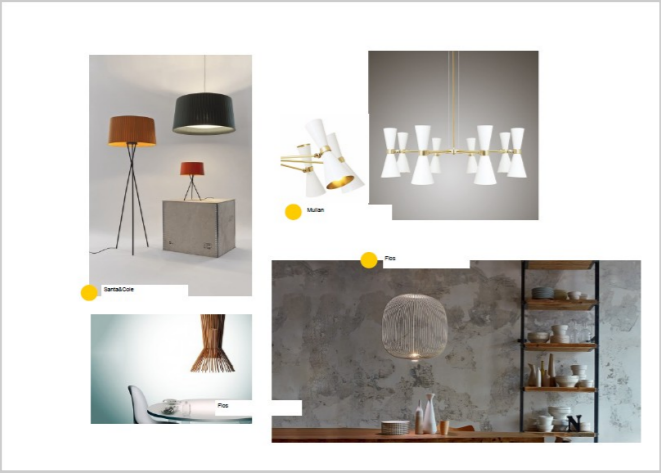
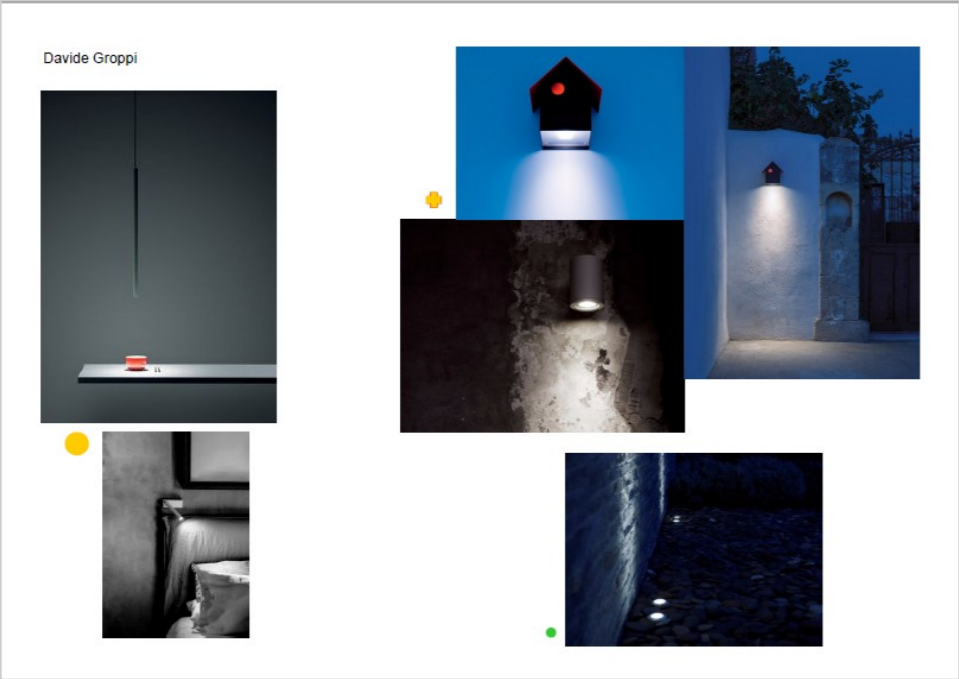


<ul style="list-style-type: none"> <li>SINGLE SWITCHED WALL SOCKET</li> <li>DOUBLE SWITCHED WALL SOCKET</li> <li>SINGLE SWITCHED WALL SOCKET (1200MM ABOVE 2 FLOOR LEVEL)</li> <li>DOUBLE SWITCHED WALL SOCKET (1200MM ABOVE 2 FLOOR LEVEL)</li> <li>SINGLE SWITCHED FUSE SPUR (SHOWN AS 1200MM ABOVE 2 FLOOR LEVEL)</li> <li>FUSE SPUR FOR TONERIAL</li> <li>WIRELESS SWITCH (1200MM ABOVE 2 FLOOR LEVEL)</li> </ul>	<ul style="list-style-type: none"> <li>1 GANG 15A 1P SWITCH</li> <li>1 GANG 2 WAY 15A 1P SWITCH</li> <li>1 GANG FULL COORDINATE SWITCH</li> <li>VENTILATOR</li> <li>EXTERNAL LIGHT</li> <li>EXTERNAL LIGHT ON FLOOR RECESSED</li> <li>RECESSED DOWNLIGHTER</li> <li>LIGHT POINT ON WALL</li> </ul>	<ul style="list-style-type: none"> <li>WALL LIGHT</li> <li>CORNER LIGHT</li> <li>MECHANICAL EXTRACT FAN</li> <li>THERMISTOR</li> <li>COMBINED EXTRACT HEAT EXCHANGER (1200MM ABOVE 2 FLOOR LEVEL)</li> <li>EXTRACTOR</li> <li>LIGHT POINT ON WALL</li> </ul>	<p><b>To be defined</b></p> <ul style="list-style-type: none"> <li>CONCRETE FLOOR</li> <li>TELEPHONE POINT</li> <li>WATER POINT</li> </ul>
---	--	--	--

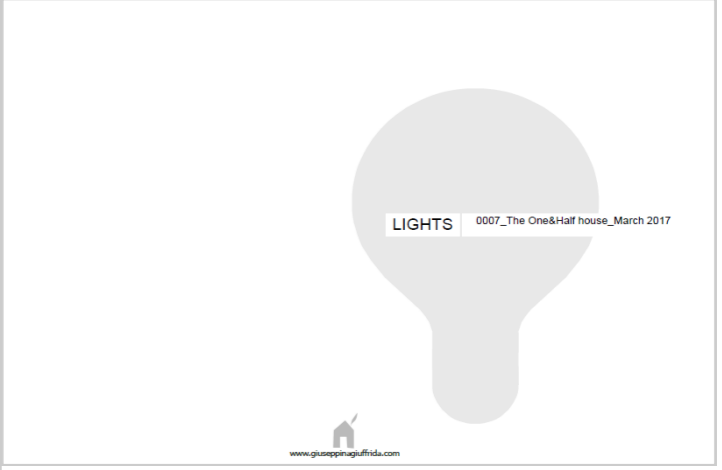
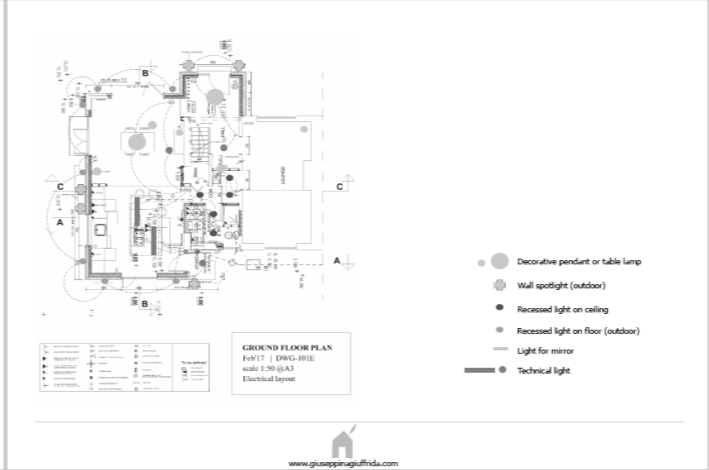
**FIRST FLOOR PLAN**  
Feb'17 | DWG-102D  
scale 1:50 @A3  
Electrical layout

Designing: electric layout.



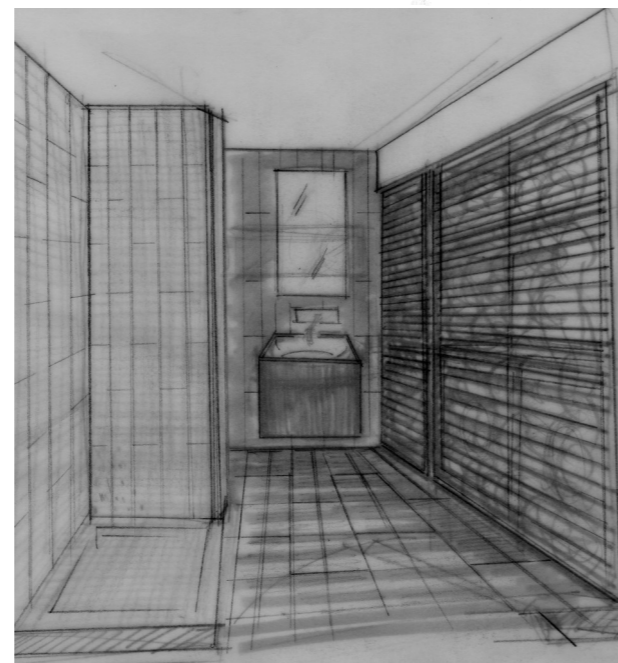
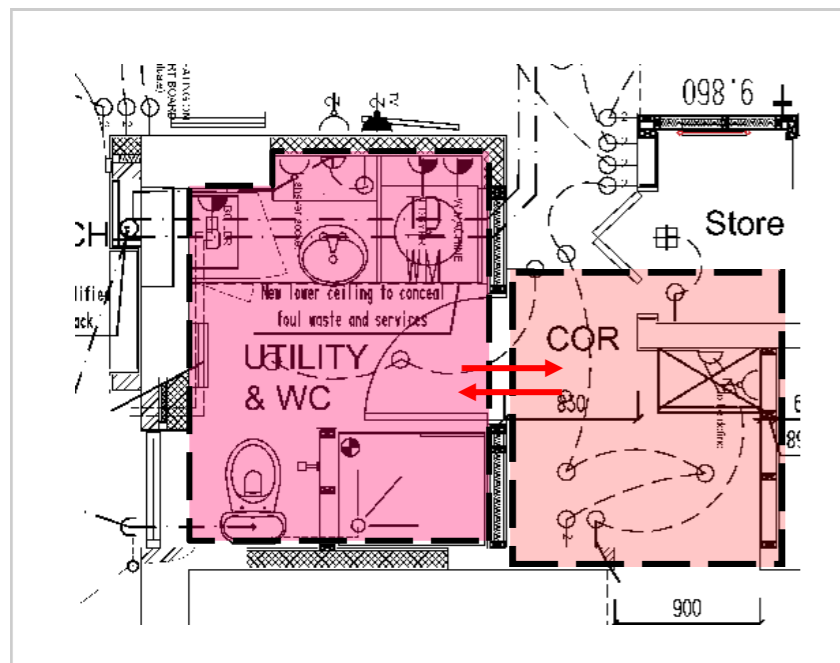
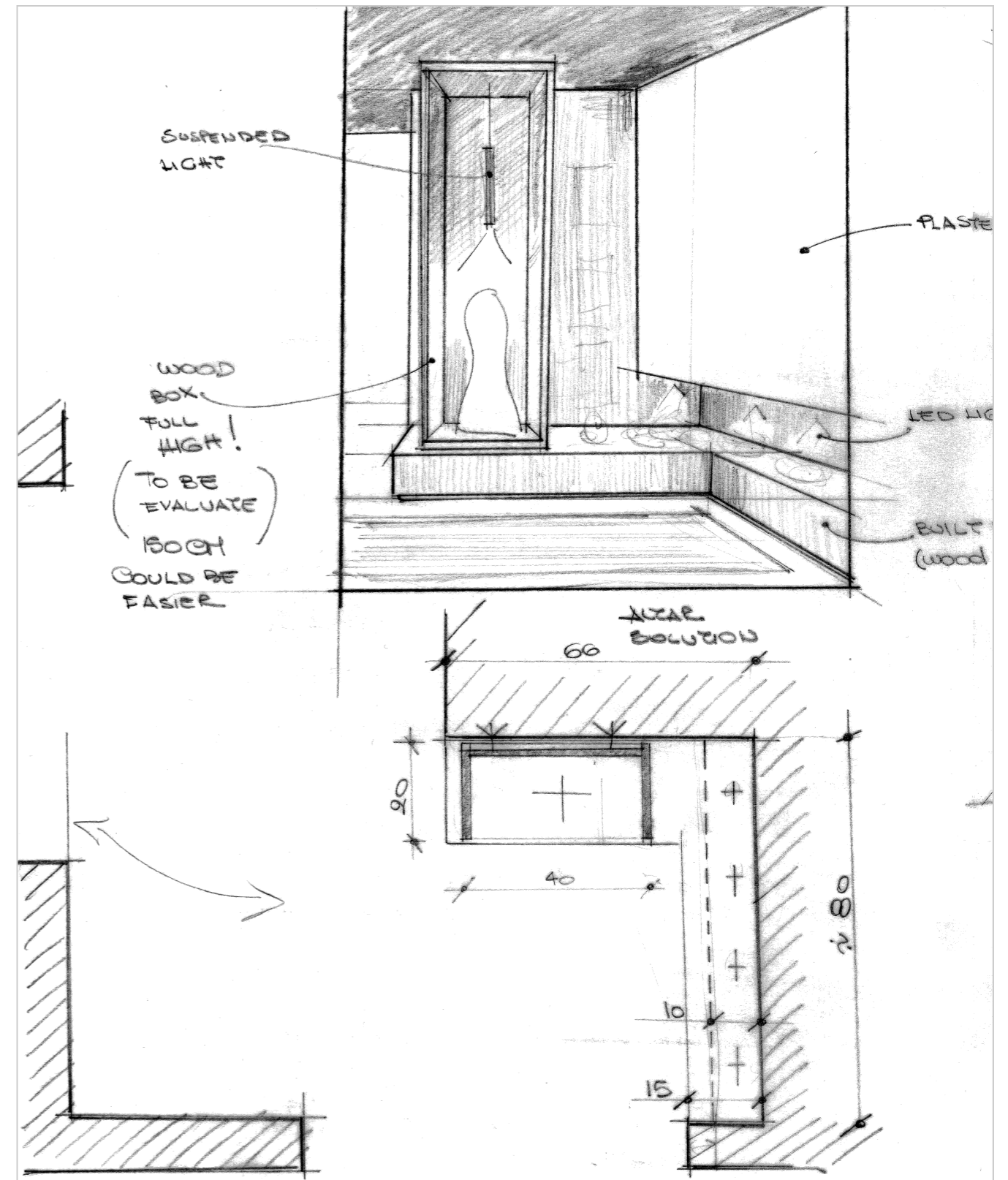
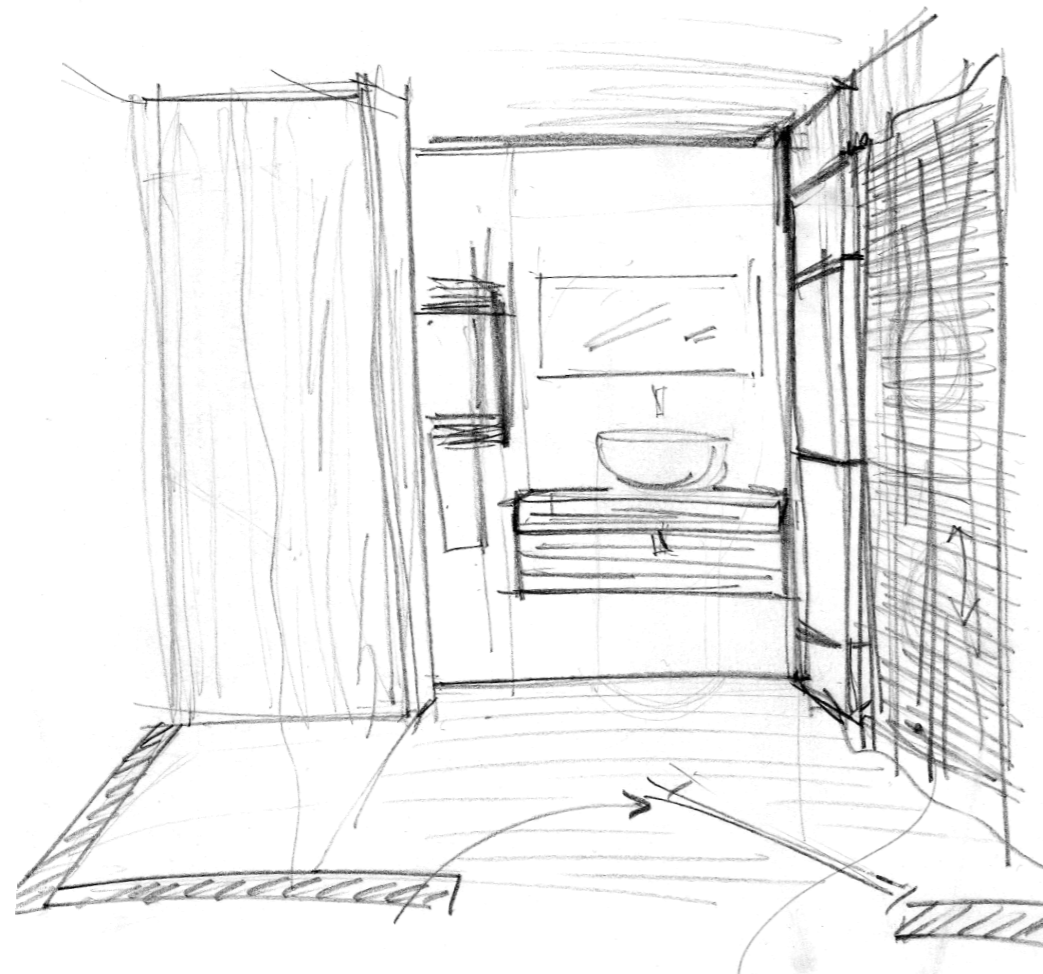


For kitchen area, trusses solution, landing...



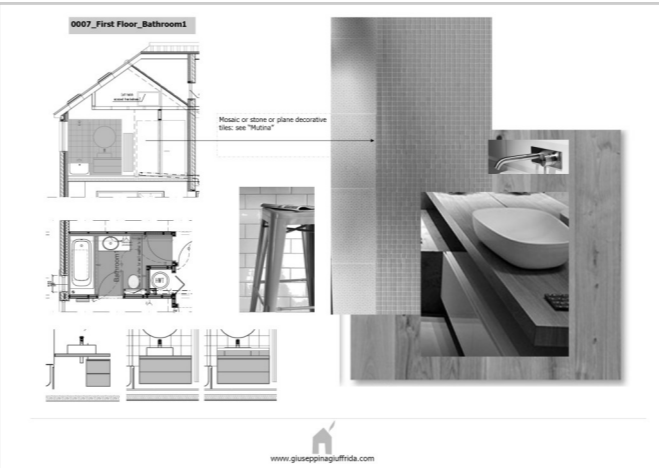
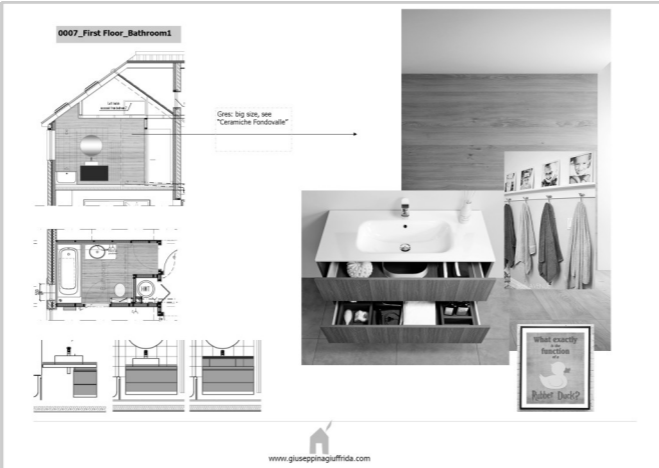
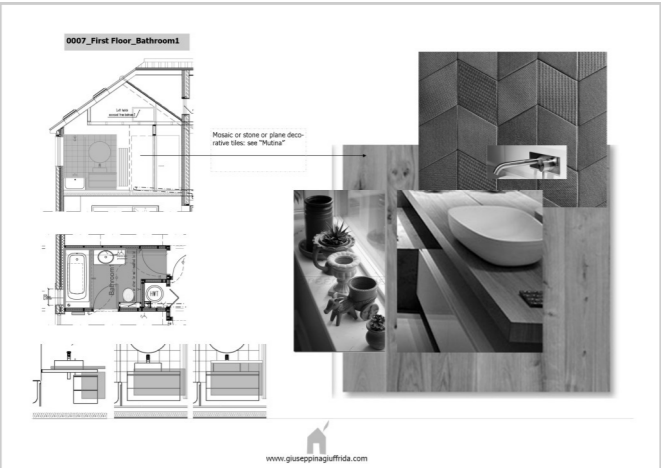
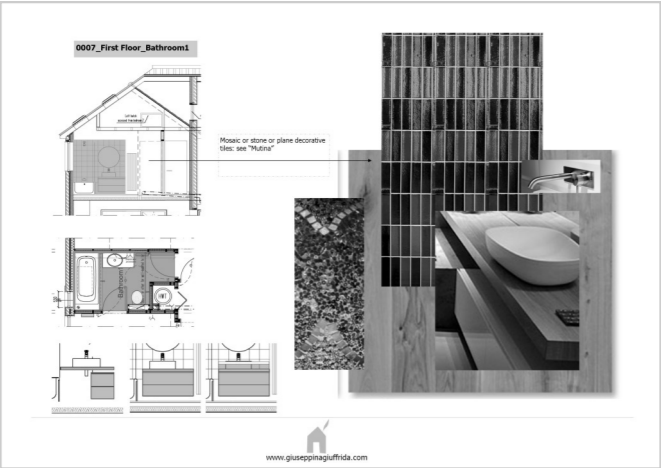
Abacus of lights to support the choices of technical and decorative lights and to allocate the budget.

VISUAL CONNECTION  
WITH ALTAR



Working on visual connection between the altar and the utility area.





Bathrooms' materials & mood boards.