



giuffridagiuseppina@gmail.com
www.giuseppinagiuffrida.com

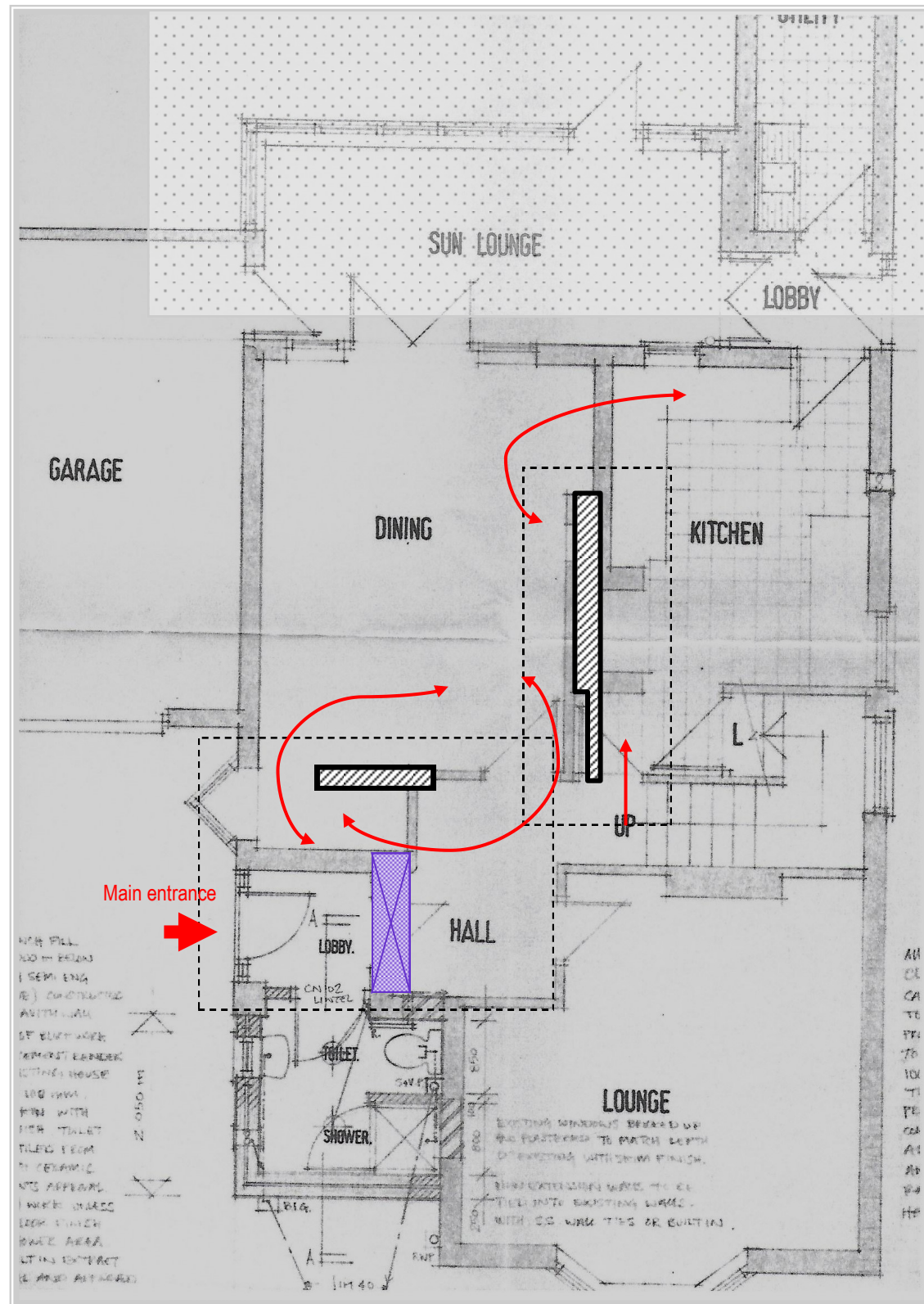


0005_Lytton Avenue

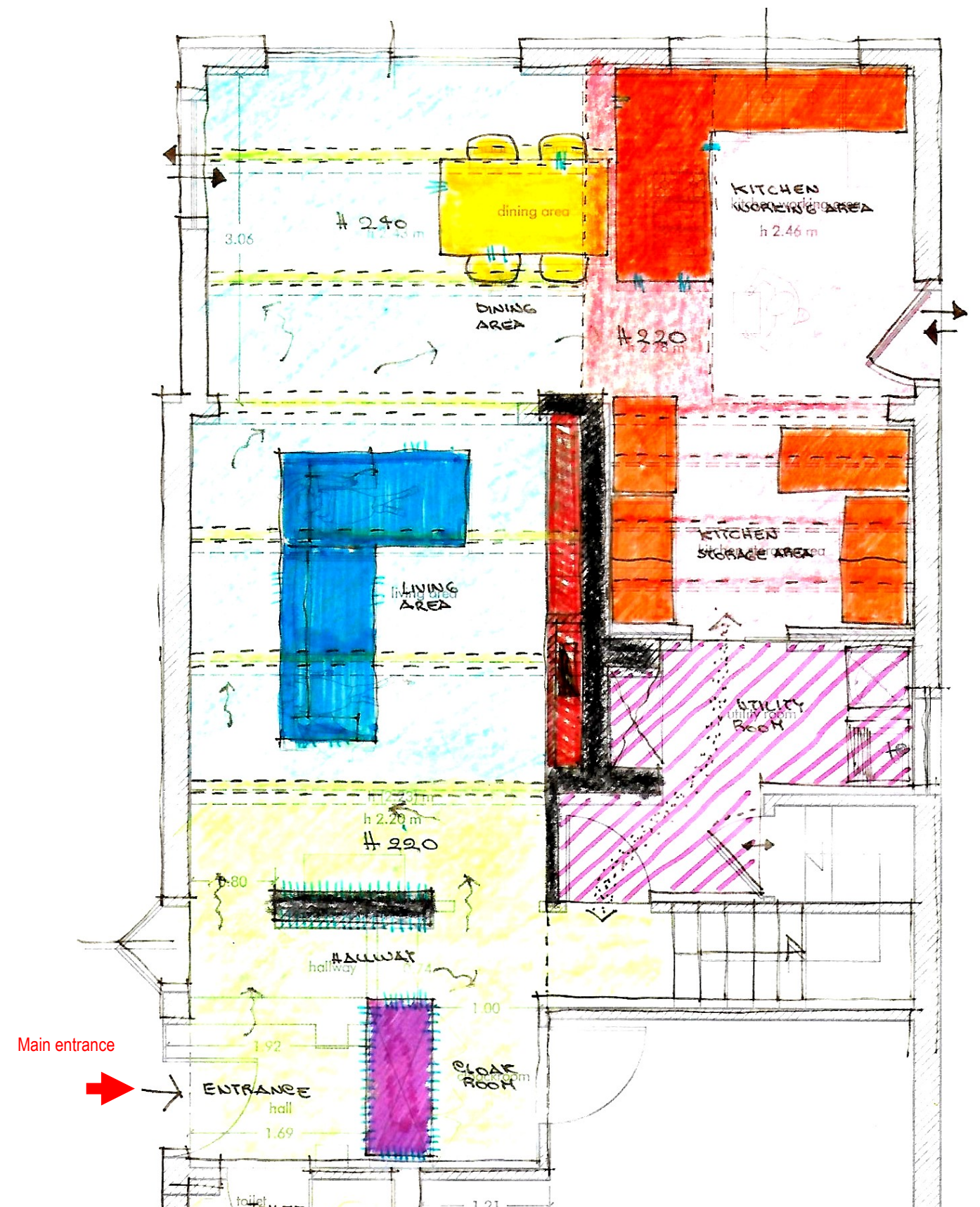
Interior redesign of a detached house located in a listed area.

Briefing and general cost estimation in progress.

2016



Key approach: working on circulation to create a new vibrancy and functional connections.





Existing
Main entrance and view from hall.





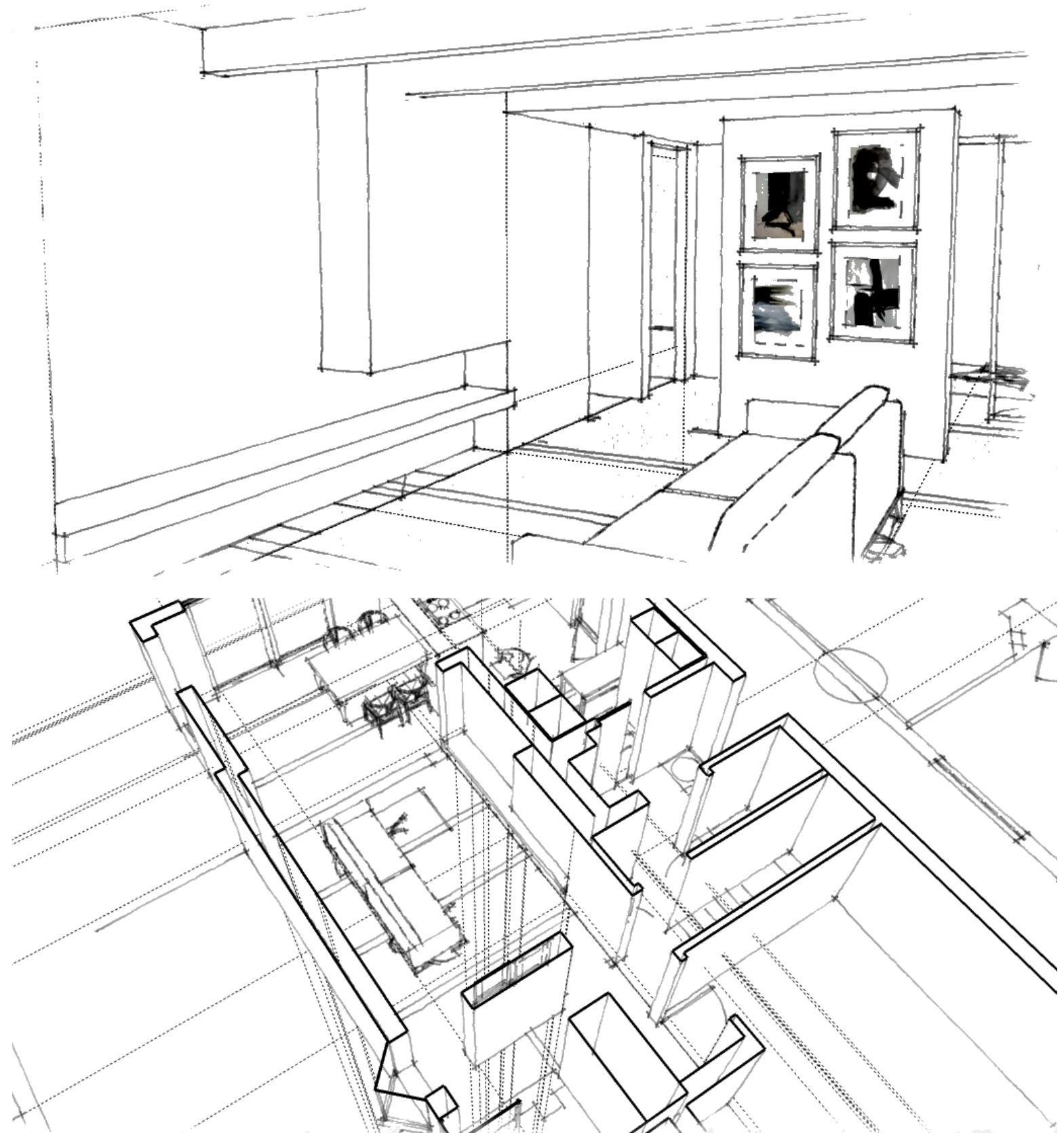
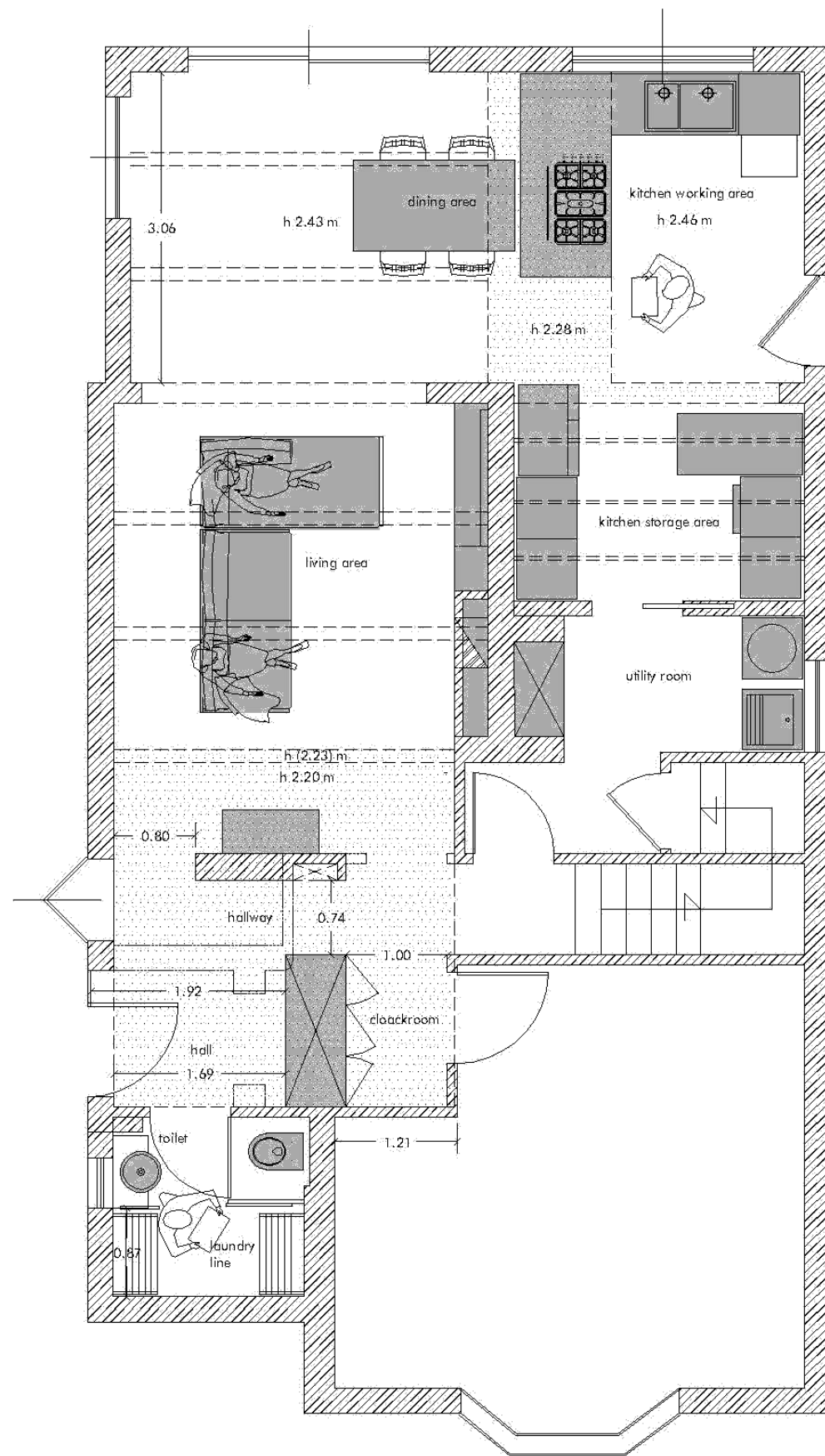
Existing
Living, views from hall way and opposite





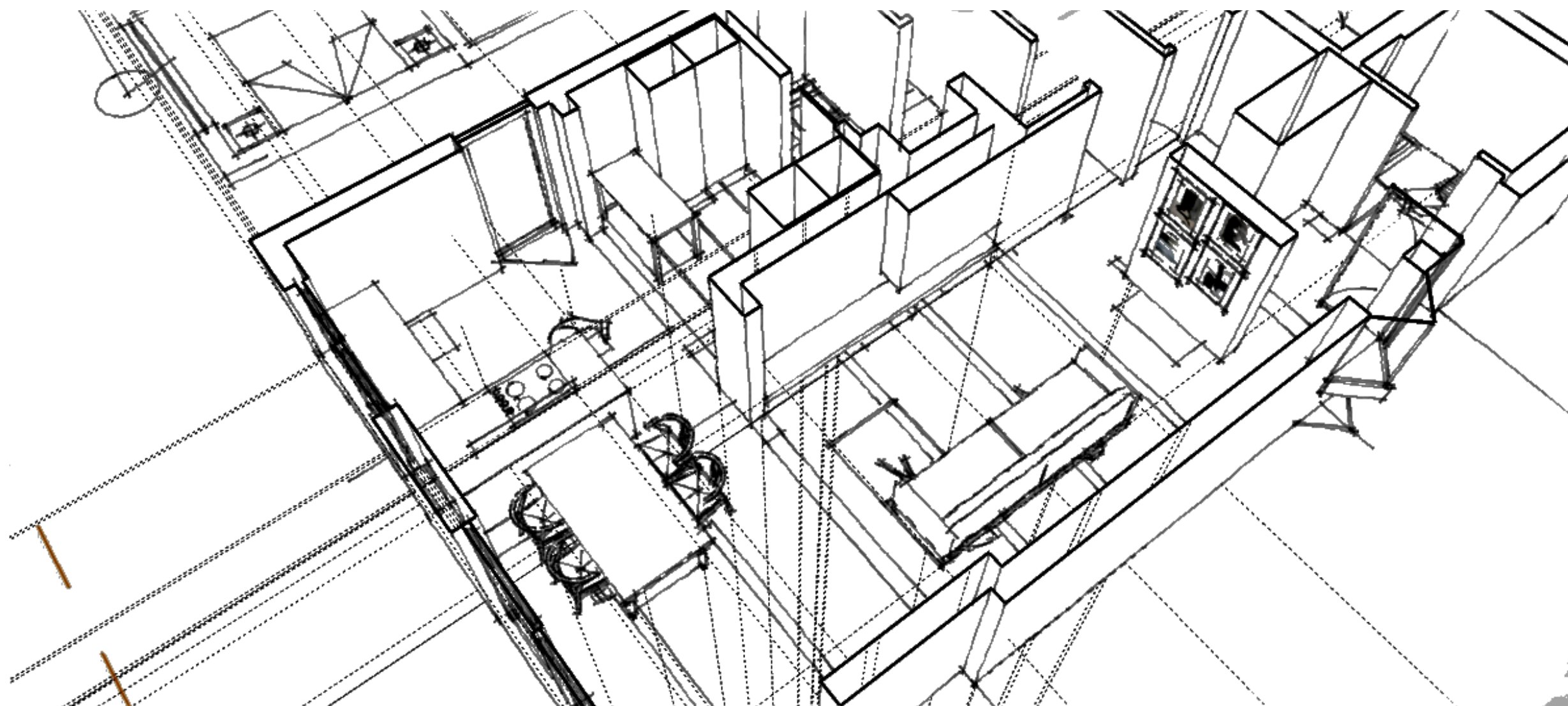
Existing
Kitchen, views from hall way and opposite





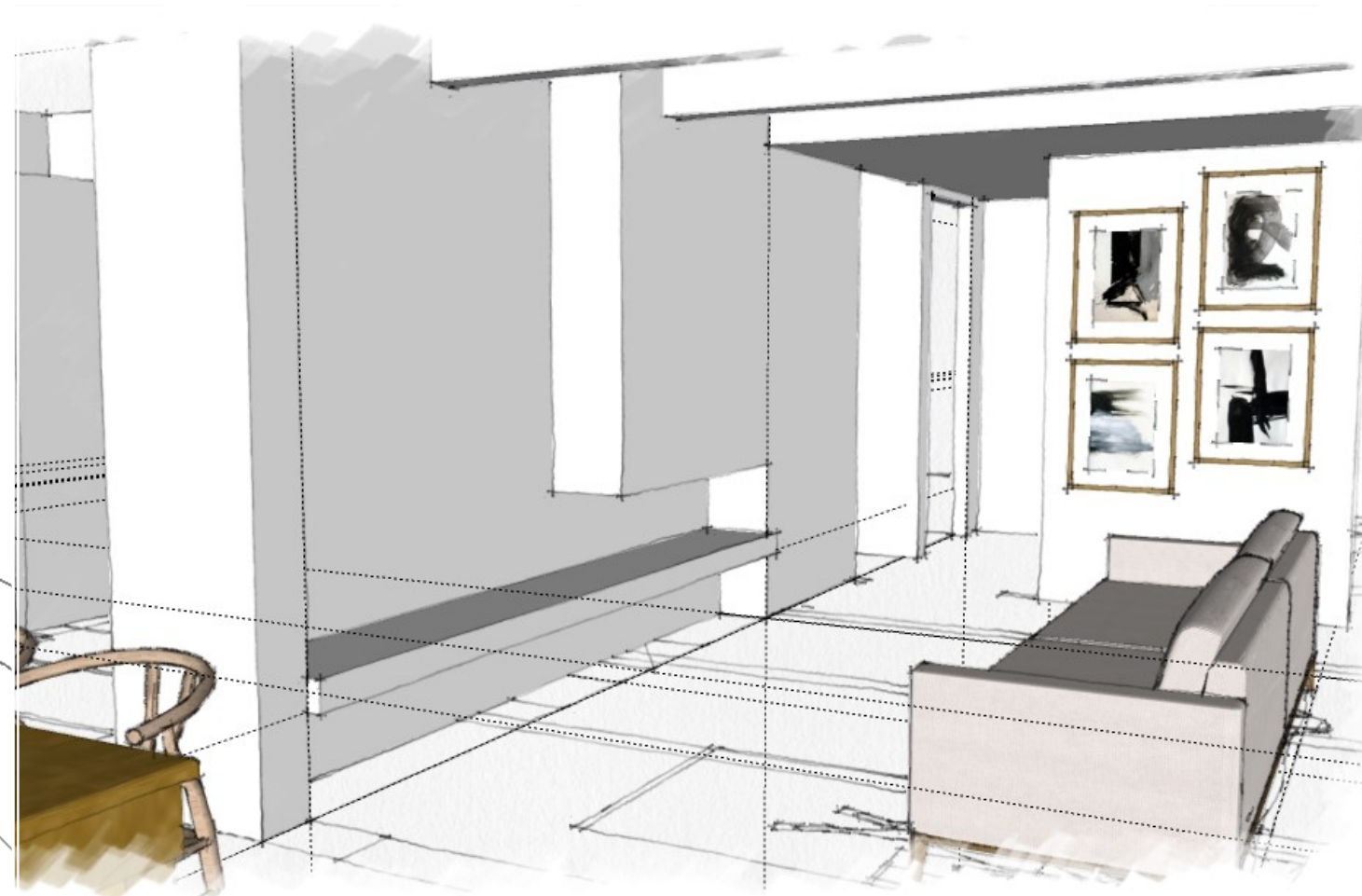
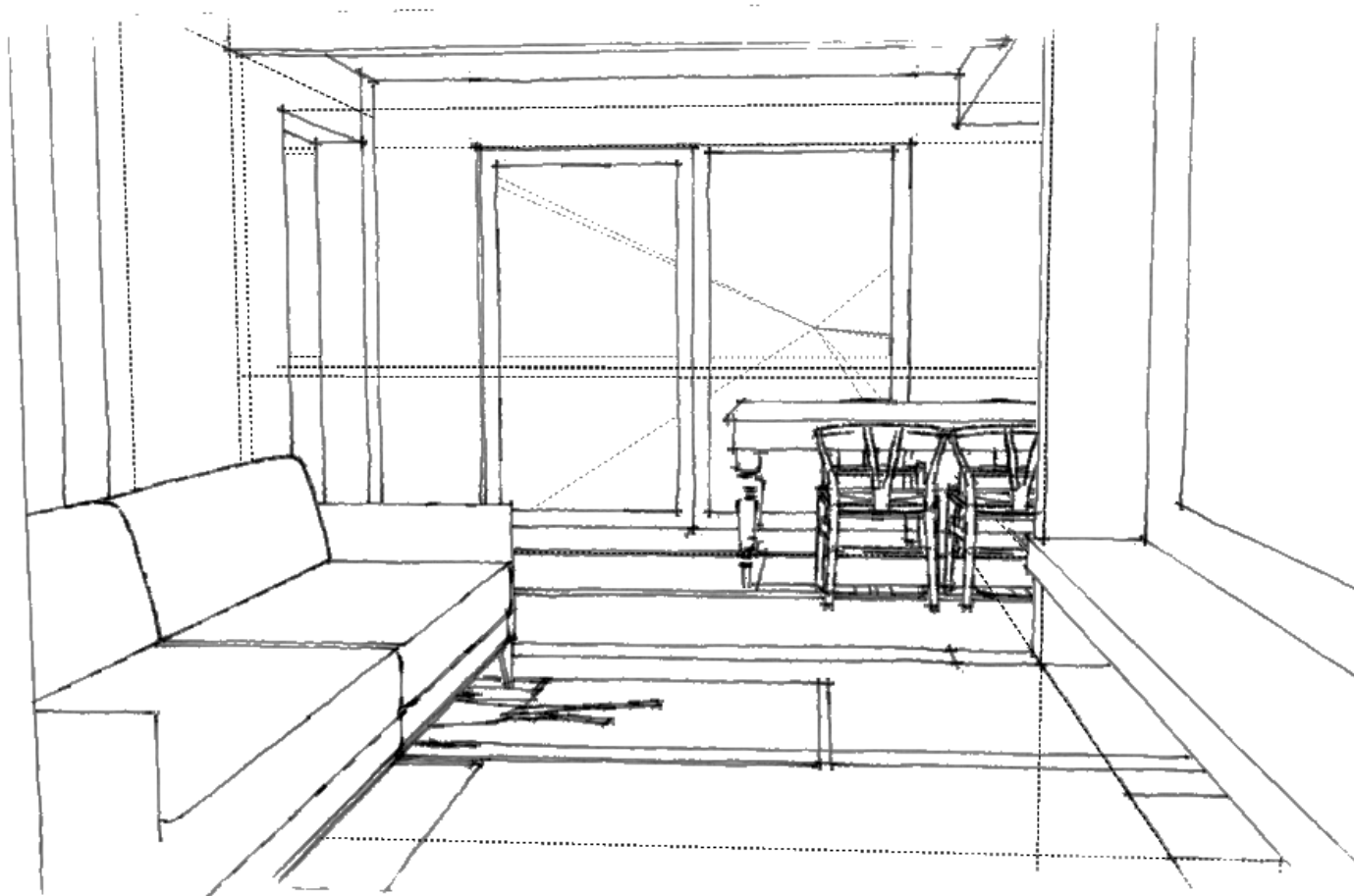
Designing: ground floor.





Designing: ground floor.





Designing
Living, views from hall way and opposite

